



Barnet Giving

Selina Rodgrigues

Barnet Giving

Selina Rodrigues

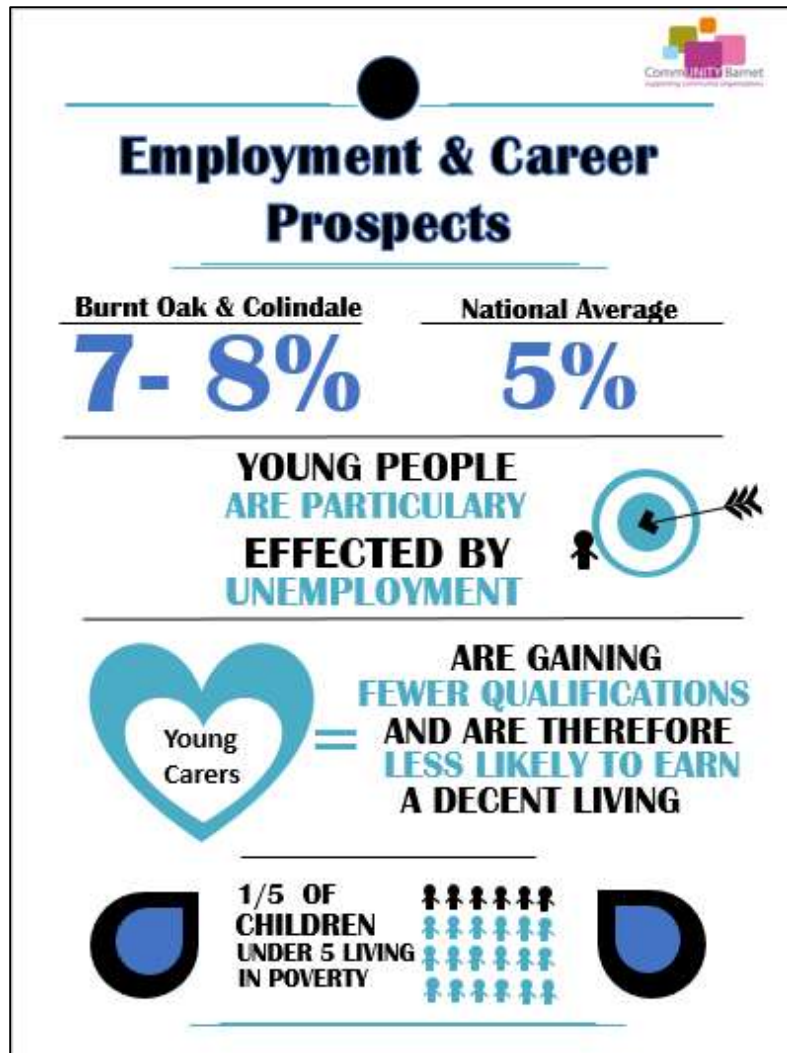
Head of Strategic Development



A place-based giving scheme for Barnet

- Bringing together local people, community groups, charities and businesses.
- Harnessing time, skills and donations to build a Barnet Giving fund that will make grants to local good causes.

The challenges



The opportunities

- Harnessing generosity
 - Turning donors into owners
 - Strengthening existing efforts
 - Working together
 - Building skills and independence
 - Developing confidence and self-reliance
- Creating a single fund led by local experts, making it easy for people to give
 - Establishing new partnerships
 - Increasing local fundraising power
 - An independent legacy fund



Steering
Committee and
Advisory Panel of
local people and
experts

Delivered by
Inclusion Barnet
and CommUNITY
Barnet

Grant
management by
London
Community



Income generated
through
fundraising
activities
business support
donations



Grants for
Barnet projects
and local
community
groups
to support local
residents



**Consultation
and local
engagement**

Structure



Priorities 2016 – Our first initiatives



Developing
SME Business
Support
Scheme in
collaboration
with FSB North
London

Nail Bar
fundraiser with
Art Against
Knives

Barnet Giving
Christmas Cards
Original artist's
designs

First Grants Programme



- Total amount available for distribution £30,000
- Grants between £1,000 and £5,000
- Themes
- Online application LCF Barnet Giving
- The Panel may prioritise smaller organisations (income less than £150,000)
- Closing date for applications: January 13

Conditions for applying

- Be working primarily with Barnet residents
- Have a minimum of 3 unrelated Trustees (unless a CIC when it's 2)
- Have a governing document
- Provide recent accounts and plans to manage finances
- Have an organisation bank account



- Barnet's pan-disability organisation, led by disabled people, supporting and empowering disabled people:
- provides a peer-led, multi-service one-stop-shop for disabled Barnet residents
- offers services based on the social model of disability, to promote independence, social inclusion and equality, and to remove barriers, enabling all of its clients to live as independently as possible with the necessary support
- 5,000 people supported in 2014/15
- 200 individual members



- Empowers local community sector – training, advice and guidance
- Services for the most disadvantaged (parents, older and young people)
- Membership of 1,500 local charities
- Represents over £1m local residents in N and NE London Boroughs
- Newsletter distribution to 80,000 contacts
- 3,000 social media followers
- Blog in local press with 1m contacts
- Over 40,000 volunteers in Barnet
- (- £12.6m volunteer hours - £180m contribution to the local economy).



Seedbed

Thank YOU for your support to date and to our funders

“Passionate about enabling local people to make a difference to the communities in which they live”

London Community Foundation

Here is the link to the new grant scheme for Barnet, Barnet Giving.
The deadline for funding applications is Friday 13th January.
Click on the link for more information.

<http://barnetgiving.org.uk/barnet-giving-fund-open-applications/>